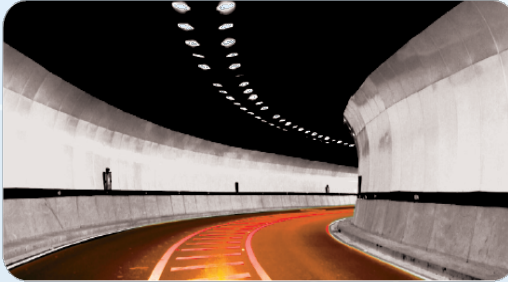




GIV-BMS™

Bridge Management System

Vertical Industry Solution using HxGN-EAM™



The Innovative Bridge & Structure Management System

GIV-BMS

Provides transportation authorities with a comprehensive Structure Registry, Inspection and Maintenance Management solution, to effectively allocate budgets to deteriorating and sub-standard performing structures within their infrastructure inventory.

Award Winning Technology

GIV-BMS is based on the world leading HxGN-EAM™ solution and technology enabling the highest level of flexibility and adaptability to local standards and needs.

GIV-BMS™ can be deployed on premise, on a public or a private cloud.

World Standards

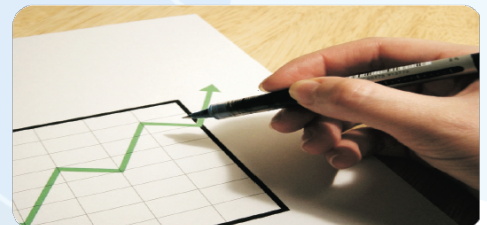
GIV-BMS is part of the integrated GIV-RMS. Road Management System and complies with the UK-CSS bridge inspection methodology which is gaining recognition throughout the world. The flexible framework stores and processes the current condition and needs of your structure inventory with unmatched integrated engineering and ease of use. The system can be adapted to support any national or state standard.

Benefits

- A flexible, user defined Inventory and survey manager
- Mobile inspection using tablets and micro drones (Unmanned Aerial Vehicles)
- Incorporating: CAD, BIM, GPRS, GPS, GIS and imagery surveyed data.
- Executing Treatment Models as determined by the engineering and maintenance managers.
- Enabling economical optimized planning of the budget, rehabilitation and maintenance needs.

Performance monitoring

The system calculates and tracks the Condition Performance Index (CPI) of each type of structure: Bridges, Culverts, Retaining walls and sign gantries. On the network level, structure Stock condition Indicators are monitored and enable the bridge managers to balance their maintenance budgets based on the stock type, location, age, or any other attribute.



Inspection

GIV-BMS provides the necessary tools to perform an effective and expedited survey of the structure. Beginning with an automated planned inspection program, the system issues the inspection work based on a pre-determined schedule. The user defined aspects of the survey are then available for the surveyor to use: structure geometric and service attributes, Structure element hierarchy, defect catalogues and imagery upload and input are at basis of each inspection.

Work Management

Pending the survey process, GIV-BMS enables bridge managers to model their treatment policy into an automated process that generates treatment recommendations based on the inspection findings. These recommendations, facilitated as work orders within the maintenance plan, are then processed through a prioritization program to be ranked and sorted according to the organizational needs.



GIS

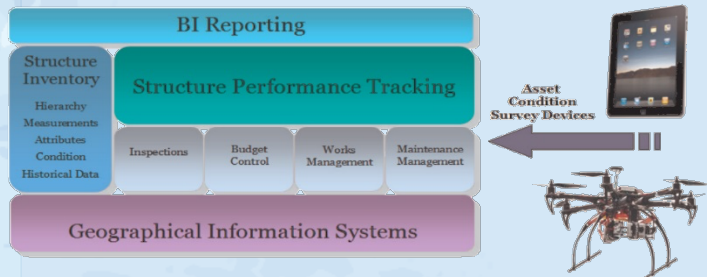
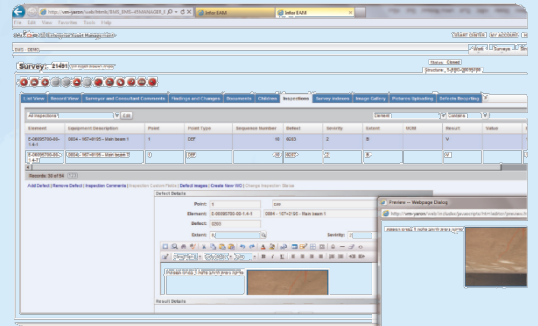
The solution has in place a state of the art 2-directional interface with the ESRI GIS platform enabling the user to view the structure location and schematics in every phase of the management process.

BI Reporting

Extensive and feature rich built-in reports of inventory, inspection and condition aspects are available. The Business Intelligence IBM-COGNOS solution is empowering the reporting needs.

Experience

The system is deployed and in extensive use with several national level customers. Used by bridge engineers and for bridge engineers.



GIV Solutions Ltd – About us:

GIV Solutions Ltd. was founded in 2001, to innovate and implement cutting edge organizational IT Solutions.

GIV Solutions specializes in service-oriented industries that rely on large scale or complex infrastructures and logistics.

For over 20 years, GIV Solutions planned and implemented projects for organizations that construct, operate and maintain Cities, Water, Energy & Transportation.

GIV Solutions represents and implements HxGN-EAM™ system globally. HxGN-EAM™ is an international leading Enterprise Asset Management, operations and maintenance system (formerly Infor Global).

Contact@GIV-Solutions.com
www.GIV-Solutions.com

Tel: +972-9-7757117 Mobile: +972-54-4516596